

*North Pole (25 064 NP)*, 2025, mixed media on canvas, 390 x 370 cm (153 1/2 x 145 5/8 in.)

## Philippe Pastor

### *North Pole and Other Precarious Landscapes*

2 December 2025 – 16 January 2026

Via della Spiga 1, Milan 20121 & Via Gargano 15, Milan 20139

Robilant+Voena is pleased to announce an exhibition of paintings by Monegasque artist Philippe Pastor in Milan. The only artist to have represented Monaco at both the Venice Biennale (2007 and 2009) and the Milan Expo (2015), the exhibition presents new works from Pastor's series *North Pole*, comprising large, monochrome, expressive canvases that evoke the duality of the power and fragility of the polar regions, and emphasise the dangers inherent to the continuous melting of the ice caps. These will be

shown alongside selected examples from the artist's series from the past ten years, including *Bleu Monochrome* and *Rose Bonbon*. Collectively, the works exemplify the artist's environmental advocacy and his mission to urge climate action. The exhibition will be installed across two locations in Milan – at Robilant+Voena's gallery on Via della Spiga, with the largest works shown at a special venue at Via Gargano 15 – offering an immersive encounter with these abstract works that percolates through the infrastructure of the city. This is **Philippe Pastor's third solo exhibition** with the gallery and his first at Robilant+Voena's Milan gallery, following presentations in St. Moritz and New York in 2024.

With this exhibition, Pastor debuts the **most recent series** of his **signature abstract canvases**, titled *North Pole*. The works range from large to monumental, inviting visitors to revel in the power of expression and **gestural action** implied through the works, while also considering the **extensive research** that is a core part of his practice. The artist creates each work with natural pigments that he personally sources from Morocco, working with raw materials that reflect the earth's riches while alluding to their fragility and man's exploitation of these resources.



*North Pole (25 062 NP)*, 2025, mixed media on canvas, 392 x 240 cm (154 3/8 x 94 1/2 in.)

The paintings in the show explicitly reference the **crisis catalysed by global rising temperatures** which are causing **unprecedented ice melt** in the polar and glacial regions. The contrast of light and dark,

often striated across the canvases, suggests not only the tender balance of ice and water, of solid and liquid, but also of the violent crevasses that occur with the destruction and collapse of ice caps. In some of the works, pigment sits on the surface like rocky matter, reiterating the physical reality of the issues, its gritty presence a reminder of the gravity of this climate emergency. The urgency with which these marks appear to tussle on the canvas reflects the artist's own concern about the immanent danger facing our planet.

Another layer of Pastor's process is the **exposure of his works to the elements**, allowing space for nature to leave its mark on his creations. After applying his materials, the artist leaves the canvas in the open air, **exposed to the four elements of wind, earth, rain and sun**. The imprint of external, unpredictable factors imbue the work with a powerful message: that nature, despite man's attempts to tame it, will ultimately remain outside our control and if we mistreat our planet, then we will bear the consequences.

The exhibition is accompanied by a **digital catalogue** including a conversation with Philippe Pastor by curator **Caroline Corbetta**, and an artist profile by journalist **Axelle Corty**.



### About the artist

**Philippe Pastor (b. 1961, Monaco)** is an artist whose wide-ranging practice encompasses painting, sculpture and mixed-media techniques. A determined advocate for the preservation of nature, Pastor uses his art to promote awareness and inspire action in support of **environmental causes**. There are two main complementary strands of his practice: **abstract canvases**, in which composition is defined through the use of natural pigments and raw elements, with Nature's contribution through the elements that compose it, and the **sculpture series *Les Arbres Brûlés (The Burnt Trees)***, an explicit denunciation of the devastation caused by forest fires and deforestation.

The only artist to **represent the Principality of Monaco** on an international stage – the **Venice Biennale in 2007 and 2009, the Milan Expo in 2015** – Pastor aims to highlight the urgency of the climate emergency. He has collaborated with the **United Nations** within the framework of UNEP (United Nations Environment Programme), supporting and participating in the 'Plant for the Planet: The Billion Tree Campaign' project. Sculptures from the *Les Arbres Brûlés* series have been installed in Singapore, New York, Munich, Nairobi, Nice, Paris, and many other places, testifying to the artist's determination to promote the cause that characterises and fuels his very existence.

Pastor is also the **founder of the Art & Environment Association**. Launched in 2007 under the patronage of **His Serene Highness Prince Albert II of Monaco** and **Professor Wangari Maathai, Nobel Peace Prize winner in 2004**, the Association organises exhibitions and events to promote widespread public awareness of climate change and the resulting damage to the planet.

Press enquiries, London: [helen@robilantvoena.com](mailto:helen@robilantvoena.com)

Press enquiries, Milan: [andrea@robilantvoena.com](mailto:andrea@robilantvoena.com)

Selection of works



*North Pole (25 014 NP), 2025, mixed media on canvas, 400 x 400 cm (157 1/2 x 157 1/2 in.)*



*North Pole (25 002 NP)*, 2025, mixed media on canvas, 320 x 220 cm (126 x 86 5/8 in.)



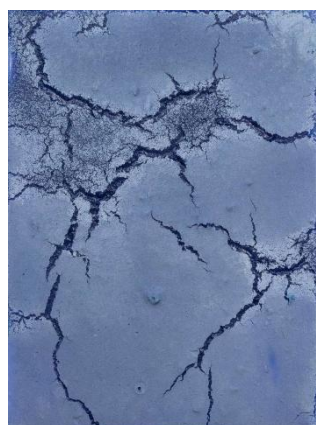
*North Pole (24 010 NP)*, 2024, mixed media on canvas,  
183 x 130 cm (72 x 51 1/8 in.)



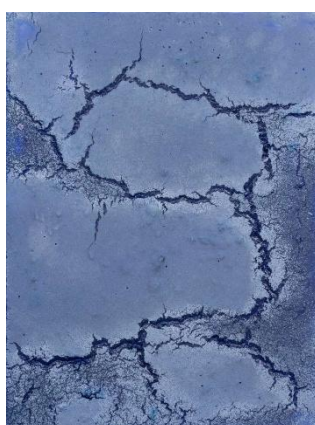
*North Pole (25 058 NP)*, 2025, mixed media on canvas,  
116 x 89 cm (45 5/8 x 35 in.)



*Bleu Monochrome (13 027 BM)*, 2013, mixed media on canvas, 162 x 130 cm (63 3/4 x 51 1/8 in..)



*Bleu Monochrome (24 046 BM)*, 2024, mixed media on canvas, 40 x 30 cm (15 3/4 x 11 3/4 in.)



*Bleu Monochrome (24 047 BM)*, 2024, mixed media on canvas, 40 x 30 cm (15 3/4 x 11 3/4 in.)



*Bleu Monochrome (24 048 BM)*, 2024, mixed media on canvas, 40 x 30 cm (15 3/4 x 11 3/4 in.)



*Bleu Monochrome (23 072 NP)*, 2023, mixed media on canvas, 200 x 200 cm (78 3/4 x 78 3/4 in.)

## About the gallery

Robilant+Voena is a partnership of art dealers Edmondo di Robilant and Marco Voena. They launched R+V in London in 2004. Further gallery spaces were opened in Milan in 2009, and Paris and New York in 2020. R+V has distinguished itself as one of the leading international art dealers in Old Master paintings, as well as 20<sup>th</sup>-century Italian art. In recent years, the gallery's dual specialisms in European Old Master paintings and 20<sup>th</sup>-century Italian art have been complemented by a carefully curated programme of contemporary projects, working with artists whose practices build upon the artistic inheritance of the past. The gallery strives to create dynamic, thought-provoking exhibitions that juxtapose the old and the new, creating unexpected links between artists working across the centuries and drawing out eternal themes through art.

The gallery has sold paintings and works of art to many important private and royal collectors and museums including the Brooklyn Museum of Art, the Frick Collection, the Metropolitan Museum of Art, the National Gallery, London, the Gallerie dell'Accademia, Venice, the Pinacoteca di Brera, Milan, the Musée d'Orsay, Paris, the National Gallery of Stockholm, the Louvre Abu Dhabi and the Museum of Western Art Tokyo. R+V is represented at the most prestigious fine art fairs in the world, and is committed to its active exhibitions program and the publication of books and scholarly catalogues.

## **Current and upcoming exhibitions**

### Milan

*A Mysterious Vision. The Uncanny and Lingerin Influences of Surrealism in Contemporary Art*,  
9 September – 15 November

### New York

*Daniel Ambrosi: Central Park*, 23 October – 4 December

### London

*Pascale Marthine Tayou*, 16 October – 21 November

## **Art fairs**

Art Abu Dhabi, Booth M31, 19 – 23 November

NOMAD Abu Dhabi, Booth R8, 19 – 23 November