

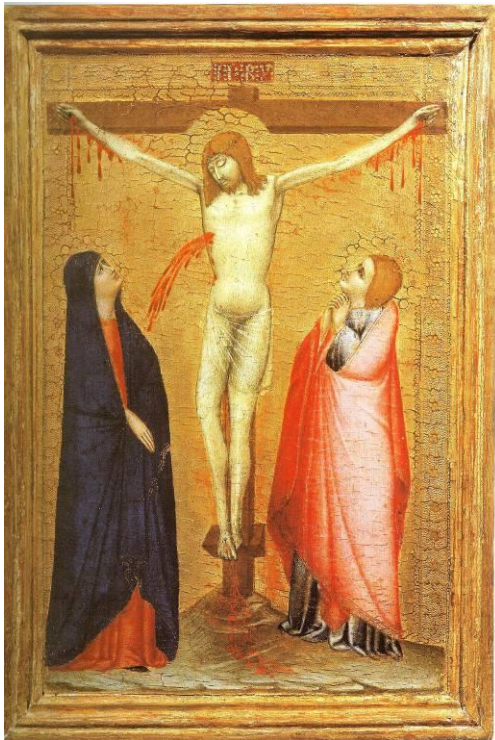
ROBILANT + VOENA at TEFAF MAASTRICHT 16-25 MARCH 2012

SHOWING MASTERWORKS BY **BASSANO, BELLOTTO, BACICCIA, BONITO, BOLDINI, CANALETTO, CAVAROZZI, CIGNAROLI, CRESPI, LORENZETTI, MARIESCHI, MARINI, MORANDI, STOMER and more**

HIGHLIGHTS OF OUR STAND, No. 374

R+V

PRESS RELEASE



AMBROGIO LORENZETTI and workshop

Siena, documented from 1319 to 1348

Crucifixion with the Virgin and St. John the Evangelist
Tempera on panel, 32.1 x 22.7 cm / 12.6 x 8.9 in

Provenance:

Wildenstein, New York;
Compagnia di Belle Arti, Milan;
Private Collection



MICHELANGELO DI PIETRO MENCHERINI

(previously Maestro del Tondo Lathrop)

Pistoia, approx 1460 – Lucca 1525

Adoration of the Shepherds
Oil on panel, cm 77.5 x 62 / 30.5 x 24.4 in

Provenance

Emile Pereire Collection, France;
Palais Galliera, Paris, 15th March 1973



LEANDRO da PONTE called LEANDRO BASSANO

Bassano 1557 – Venice 1622

Portrait of a Gentleman with a Sculpture, Circa 1595

Oil on canvas, 91.5x73 cm / 36 x 28.7 in

Signed in the upper part on the left: *LEANDER A PONTE/ BAS.../ AEQUES/ F.*

Provenance

Carlo Orsi, Milan;
Koelliker collection, Milan.



GIOVANNI BATTISTA GAULLI CALLED IL BACICCIA

Genoa 1639 – 1709 Rome

The Virgin and Child (The Rest on the Flight to Egypt)

ca. 1695 - 1705

Oil on octagonal canvas, 91 x 78.5 cm / 35.8 x 30.9 in

Provenance

Cardinal Girolamo II Colonna, Rome (1708 - 1763) (see post mortem inv. of 1763);

Filippo III Colonna, Prince of Paliano, Gran Connestabile del Regno di Napoli (1760 - 1818) (see cat. of 1783);

probably his second daughter Margherita Colonna, Principessa Rospigliosi, wife of Prince Giulio Cesare Rospigliosi;
Rospigliosi collection, Rome, until 1932;



BERNARDO BELLOTTO

Venice 1722 -1780 Warsaw

The Entrance to the Grand Canal, Venice, looking West, with the Dogana and the Church of Santa Maria della Salute

Oil on canvas, 65 x 85.4 cm / 25 5/8 x 33 5/8 in

Provenance

Acquired by James Harris, M.P. (1709-1780), for whom imported from Venice by William Hayter of London in March 1743; His son Sir James Harris, GCB, PC, created Baron Malmesbury 1788 and Viscount FitzHarris and Earl of Malmesbury in 1800; By descent;

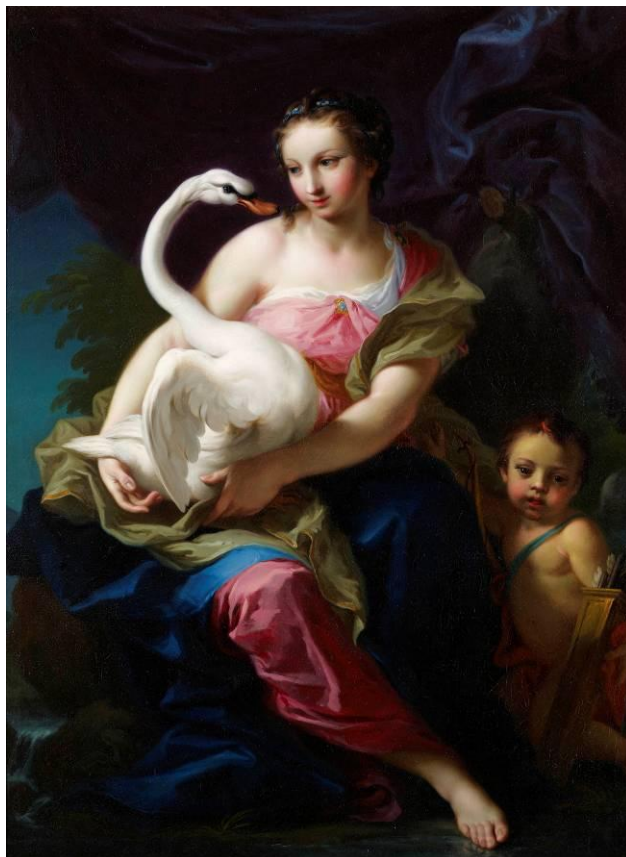


GIOVANNI ANTONIO CANAL called IL CANALETTO, 1697 - Venice - 1768

The Torre di Marghera, Oil on canvas, 31.5 x 46.2 cm / 12.4 x 18.4 in

Provenance: Dmitri Tziracopoulo, Berlin, before 1939, and subsequently Athens; with Thomas Agnew & Sons Ltd, London, 1984; Jaime Ortiz Patino; with Thomas Agnew & Sons Ltd, London 1987; Robert H. Smith, Crystal City, Virginia; Simon Dickinson Ltd; Private European collection.

Exhibitions: London, National Gallery of Art, and Washington, National Gallery of Art, *Venice, Canaletto and his Rivals*, 2010 – 2011



GIAMBETTINO CIGNAROLI

(1706 – Verona – 1770)

Leda and the Swan, 1756

Oil on canvas, 153 x 116 cm / 60.2 x 45.7 in
Signed on the rock, bottom left: *Cignarolius P.*

Provenance

Electors' Cabinet August III of Saxony, King of Poland (from 1734 to 1763), Dresden

Selected Literature

I. Bevilacqua, *Memorie della vita di Giambettino Cignaroli eccellente dipintor veronese*, Verona 1771, p. 74;
D. Zannandreis, *Le vite dei Pittori, Scultori e Architetti veronesi*, a cura di G. Biadego, Verona 1891, p. 382;
S.J. Warma, *The paintings of Giambettino Cignaroli (1706-1770)*, Milano 1997, p. 272;
F. Magani, *Dipinti profani di Giambettino Cignaroli*, in "*Arte Documento*", 15.2001, p. 180; A. Tomezzoli "Verona, madre e nutrice d'eccellenti Pittori", in *Il Settecento a Verona*, exhibition catalogue, ed. F. Magani, P. Marini, A. Tomezzoli, Cinisello Balsamo 2011, pp. 31-53.



GIOVANNI BOLDINI

1842-1931

Portrait of Ena Wertheimer

Signed and dated lower left: *Boldini/1902*

Oil on canvas, 155.5 x 103 cm. / 61½ x 40½ in

Literature

The Graphic, 3 February 1906, illustrated.

C.L. Raghianti and E. Camesasca, *L'Opera completa di Boldini*, Milan, 1970, p. 116, no. 343, erroneously identified as Mrs E.A. Salaman, i.e. Betty Wertheimer, the subject's sister (illustrated).

P. Dini, exh. cat, *Giovanni Boldini*, Pistoia, 1984, cited in chronology, p. 141.

B. Doria, *Giovanni Boldini. Catalogo Generale degli archivi Boldini*, Milan, 2000, no. 441, erroneously identified as Mrs E.A. Salaman (illustrated).

P. Dini and F. Dini, *Giovanni Boldini, 1842-1931: catalogo ragionato*, Turin, London and Venice, 2002, vol. I, pp. 210 and 288; vol. IV, pp. 425 and 427, no. 797 (illustrated).

T. Panconi, *Giovanni Boldini, L'opera completa*, Florence, 2002, p. 429, erroneously identified as Mrs E.A. Salaman (illustrated).



GIORGIO MORANDI, 1890-1964

Natura Morta, 1954

Oil on canvas, 28 x 44 cm, 11 x 17.3 in, Signed bottom centre: *Morandi*

Vitali 898

For more information please contact **Mira Dimitrova** via mira@dirobilant.com or 0207 409 1540.